

# ScotEID Java Application Installation instructions and use of the program

## 1. Checking for the presence of Java on your PC.

Go to [www.scoteid.com](http://www.scoteid.com) and log in using your username and password

Use the Site Navigation Panel on the left-hand side

Choose Reference Material then Software/Manuals

<b>Site Navigation</b> <ul style="list-style-type: none"><li>Home</li><li>About the EID Pilot</li><li>Partner Farm Info</li><li>Become a Partner Farm</li><li>Reference Material<ul style="list-style-type: none"><li>Software/Manuals</li></ul></li><li>Marts and Abattoirs</li><li>Discussion Forum</li></ul>	<b>EID Readers &amp; Software</b>  <b>ScotEID Software</b> <p>The ScotEID team have produced simplified reader software for capturing data from EID readers. You must have <b>JAVA</b> installed on your computer to run this software. <a href="#">Test if you already have Java</a> if required <a href="#">Download it</a> Once you have done the above.</p> <p>ScotEID Java Software: <a href="#">Download/Run</a></p> <p>Instructions: Coming soon!</p> <p>Currently supported EID readers: Agrident, Allflex, Gallagher</p>
---	---

Below ScotEID Software you will see the following

Click on [Test if you already have Java](#) and you should see a moving icon like a dancing tooth.


**Test your JVM**

You are using an older version of JRE. You can download the latest version from the Java Software Download link above.

Your Java configuration is:

Vendor:	Sun Microsystems Inc.
Version:	Java 6 update 7
Operating System:	Windows XP

[More Information](#)



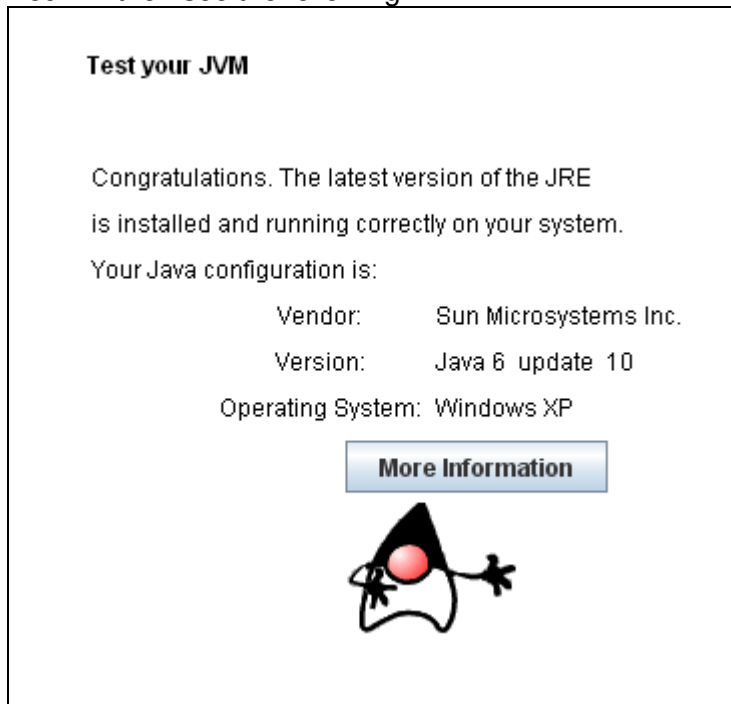
This page tests to see if the JRE is working on your computer. This test applet, written with Java technology, displays information about your operating system, the JVM and the Java Runtime Environment (JRE).

If you do not see this you will need to download the Java Version that suits your operating system. In most cases this will be Windows XP or Vista. However there are options for other operating systems.

It may also say that you are not using the most recent Java Version, and if you wish, you can update your current java version, but it should not be necessary to have the very latest version of Java.

You can download and install the latest version of Java from here if you follow the instructions. These will vary slightly depending on your operating system. To download it click “ if required [download it](#)”.

You will then see the following:



## 2. Downloading the software.

Once you have confirmed that you have Java installed on your PC then from the ScotEID webpage showing Reference Material/Manuals click on ScotEID Java Software: [Download/Run](#) as shown on the screen below.

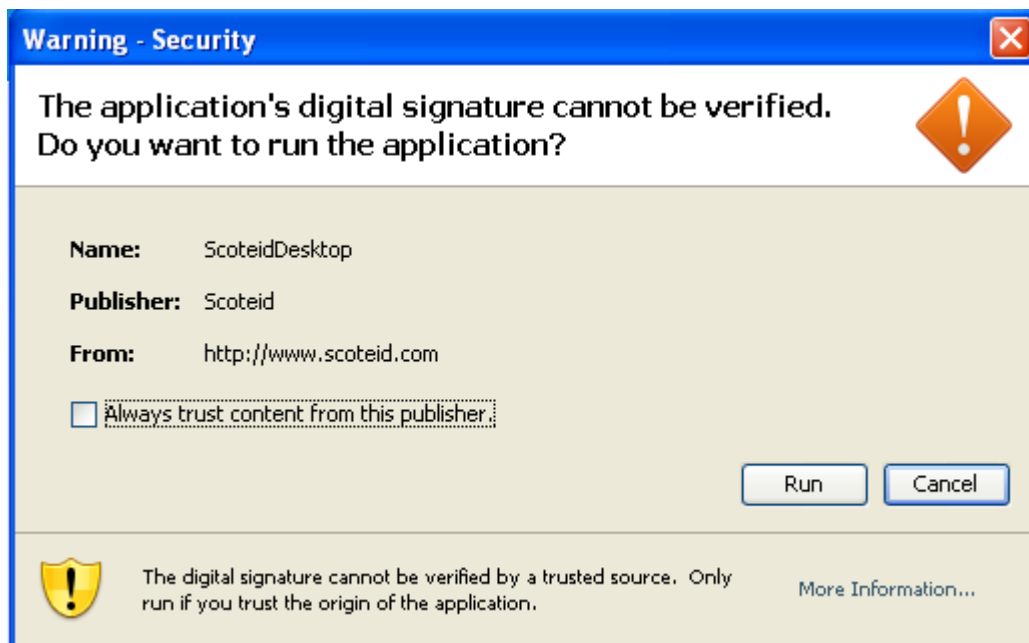


This will start the download and run the file to install the software.

You will receive a warning as shown below.

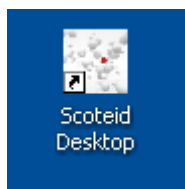
You must tick the box to “Always trust content from this Publisher” and click on “Run”.

**On first installation the same box will appear again and you must repeat the same procedure.** You must tick the box and click on run on both screens.



The application should open as the installation finishes.

An icon will appear on the Desktop and in the Programs menu.



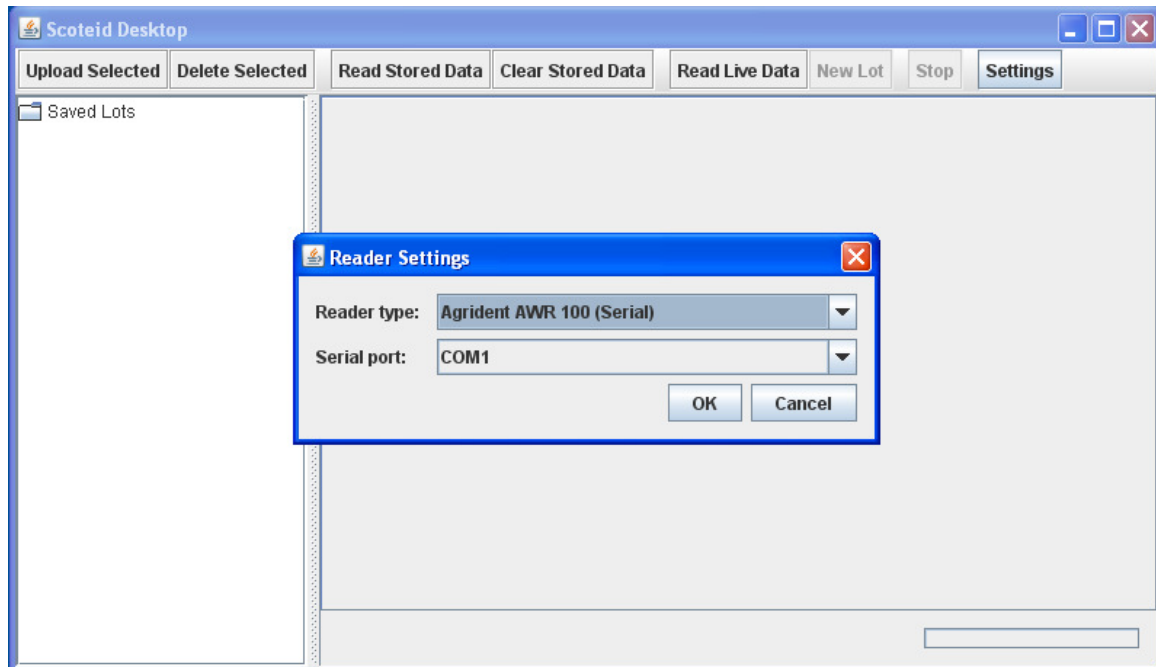
That completes the setup of the ScotEID Java application.

Please note that the software will be updated from time to time, and on opening the application, the program will check for updates if you are connected to the Internet. If you see a download starting then allow it to complete the procedure , and your ScotEID java software will have been updated.

### 3 RUNNING THE PROGRAM

#### 3.1 Setting up the reader.

First – Open the ScotEID Desktop program using either the desktop icon or the Start – Programs – ScotEID Desktop – ScotEID Desktop.



When the program opens, choose Settings

Select the type of reader you are using from the drop down list.

Select the serial port you are using from the dropdown list and click on “OK”  
[The program detects all the COM ports on your computer and shows them for selection. If you do not know which com port you are using you will need to try them in turn.

If you are using a USB to Serial cable, look at the serial port selection, then put the cable in and look again. When you look after inserting the cable, the port using the USB to serial cable should be obvious as it will not have been on the list the first time you looked.]

NB if you are using a USB to serial cable, it is a good idea to use the same USB slot each time. If you don't, the computer will allocate it to a different COM port number the next time.

#### 3.2 READ STORED DATA or READ LIVE DATA

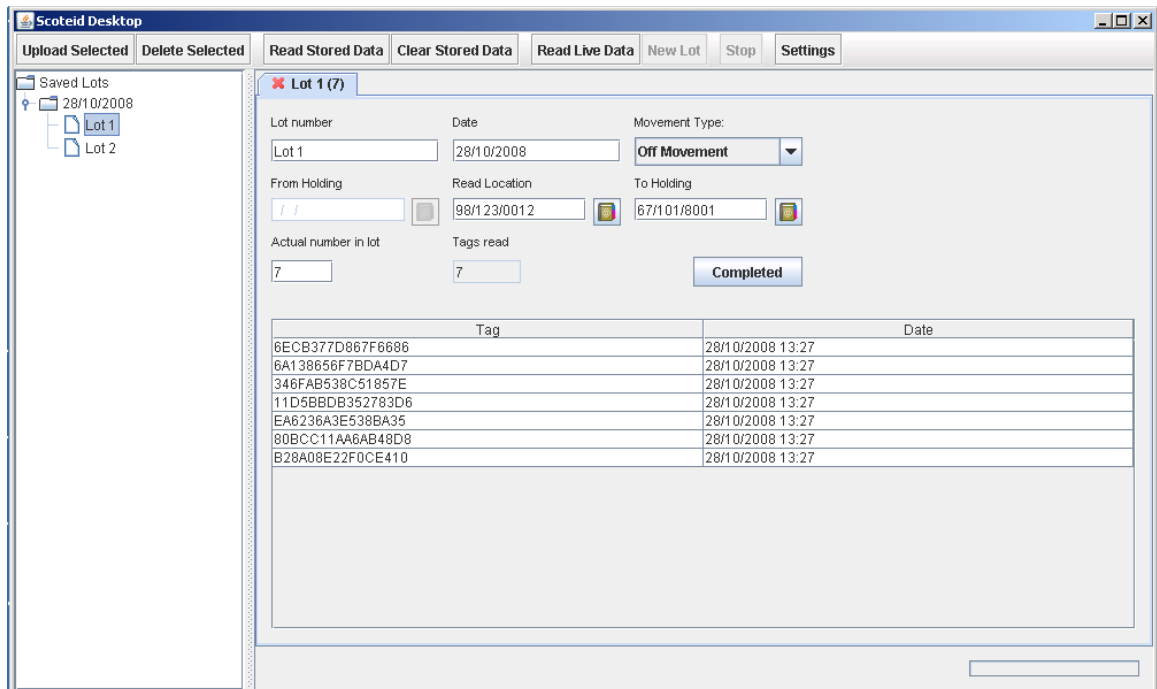
The selection you make here depends largely on what type of reader you intend using.

A “fixed reader” would normally be set to read live data, ie the application is reading the data in real time.

It is also possible for Bluetooth enabled wands or other portable readers to operate in this mode. However in most applications you would be reading from the memory of the portable reader and the tab to click would be “**Read stored data**”.

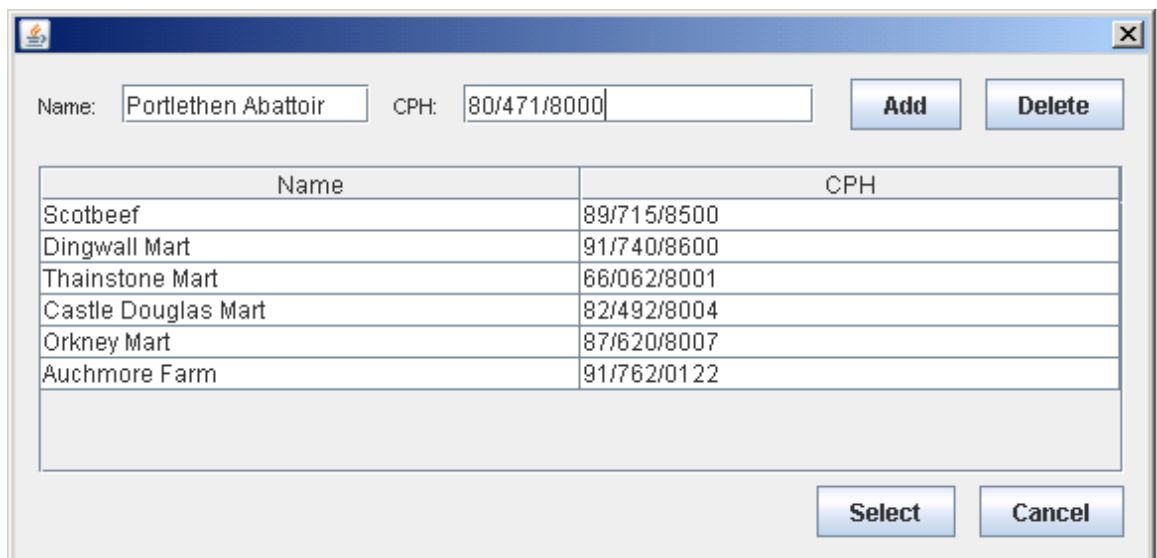
The data is then recorded in the application similar to the manner shown below.

When creating lots with a fixed reader in Live mode, you must click on the **New Lot** button before reading the next lot. However, when downloading data from stored data ie an Allflex or Agrident stick reader, the lots will be created themselves in sequential order. This assumes that you have used the Lot separator function on the reader, or one of the ScotEID lot separator cards.



### 3.3 Completing Lot Data

Once you have completed reading tags, you should go back and complete the movement type, and holding numbers as well as the actual total number of animals that were in the lot. In the likes of a mart or abattoir, you should change the automated lot number to the actual lot number used by the mart or abattoir that day. Please note that by selecting the movement types, the application will determine which locations need to be entered [those no required will be grey]. The Java application can store commonly used CPH numbers in the combo boxes for movement type. If you click on the combo box, the following screen will appear.



It is a good idea to put your own CPH in first. Just enter the name and the CPH and click on “**Add**” and it will store it on your applications CPH list. Once you have started to compile a list, just click on the name or CPH shown below and click on the “**Select**” button.

Name:  CPH:

Name	CPH
Scotbeef	89/715/8500
Dingwall Mart	91/740/8600
Thainstone Mart	66/062/8001
Castle Douglas Mart	82/492/8004
Orkney Mart	87/620/8007
Auchmore Farm	91/762/0122

### 3.4 Preparing Data for Upload

For each lot, once you have completed the required details, click on the “**Completed**” button. You will be prompted if you have missed one of the required fields. Repeat this until all lots downloaded or recorded are done.

Completed lots will appear on the frame on the left hand side coloured in green as shown below.

Scoteid Desktop

Upload Selected | Delete Selected | Read Stored Data | Clear Stored Data | Read Live Data | New Lot | Stop | Settings

Lot 8 (0) | Lot 1 (7) | Lot 2 (8)

Lot number:  Date:  Movement Type:

From Holding:  Read Location:  To Holding:

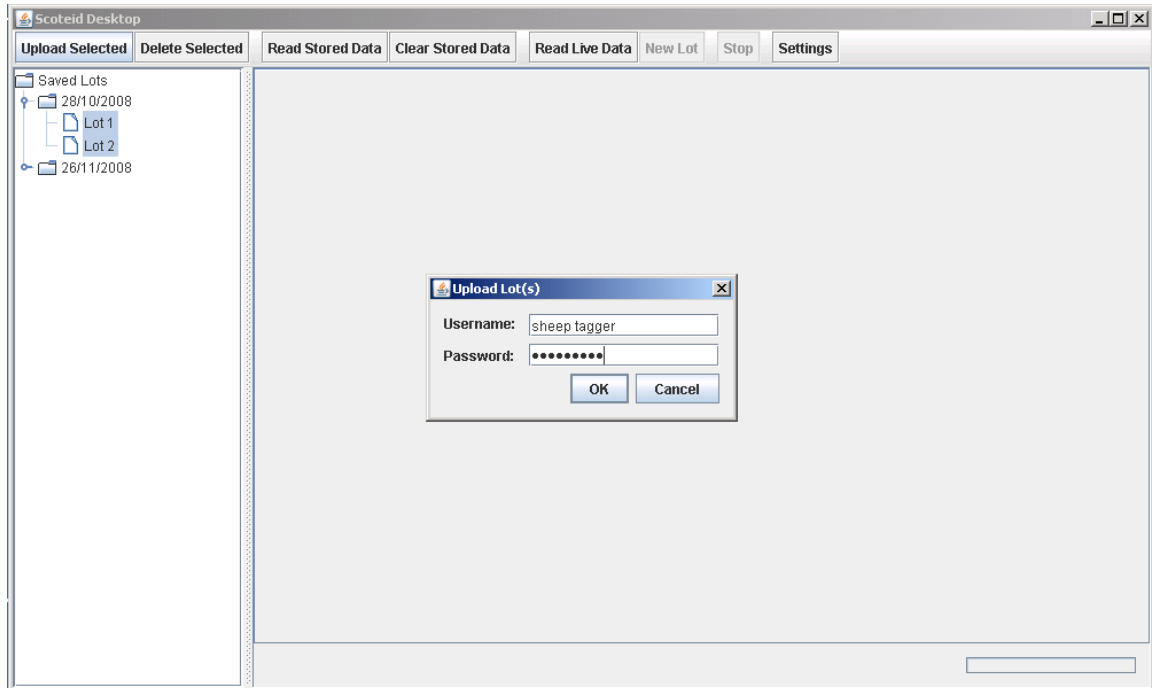
Actual number in lot:  Tags read:

Tag	Date
6ECB377D867F6686	28/10/2008 13:27
6A138656F7BDA4D7	28/10/2008 13:27
346FAB538C51857E	28/10/2008 13:27
11D5BBDB352783D6	28/10/2008 13:27
EA6236A3E538BA35	28/10/2008 13:27
80BCC11AA6AB48D8	28/10/2008 13:27
B28A08E22F0CE410	28/10/2008 13:27

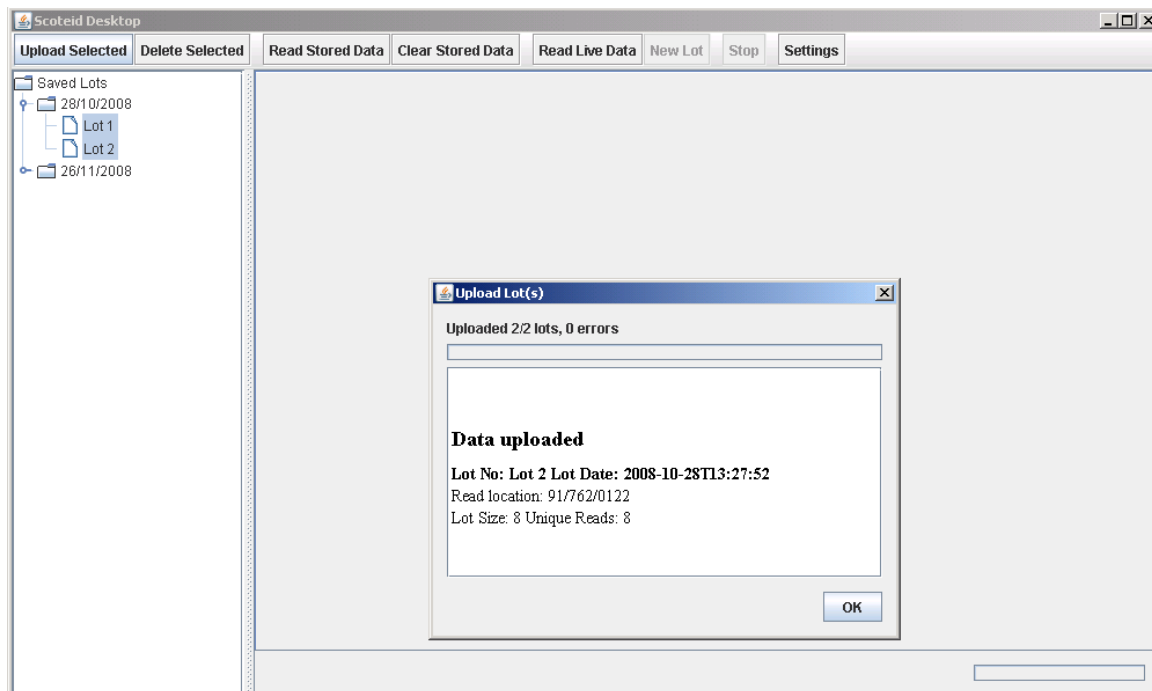
Reading..

### 3.5 UPLOADING DATA

Click on the green lots to be uploaded, then click the **“Upload Selected”** button. A pop-up box will appear asking for your user name and password for the ScotEID website



When you click **“OK”**, your data will be uploaded and the data stored on the web-site. A message similar to the following will appear



Once again click on **“OK”** and the following screen will appear.

### 3.6 Upload Completed.

Please observe that the uploaded lot numbers are now highlighted in a bright turquoise and you will observe that those lots have been transferred out of the Java application.

They are now stored on the ScotEID website sheep movement database for further use.

